

---

# E715 Service Guide



Version	Date	Note
1.0	JUN.19, 2016	Initial release

---

## Table of Contents

Table of Contents.....	2
Introduction.....	3
Product Overview.....	3
POS part.....	4
Take Apart.....	5
Before You Start.....	5
Important Instructions.....	5
Tools to prepare.....	5
Host part.....	5-7
Custom display part.....	8-9

---

## Introduction

### Product Overview

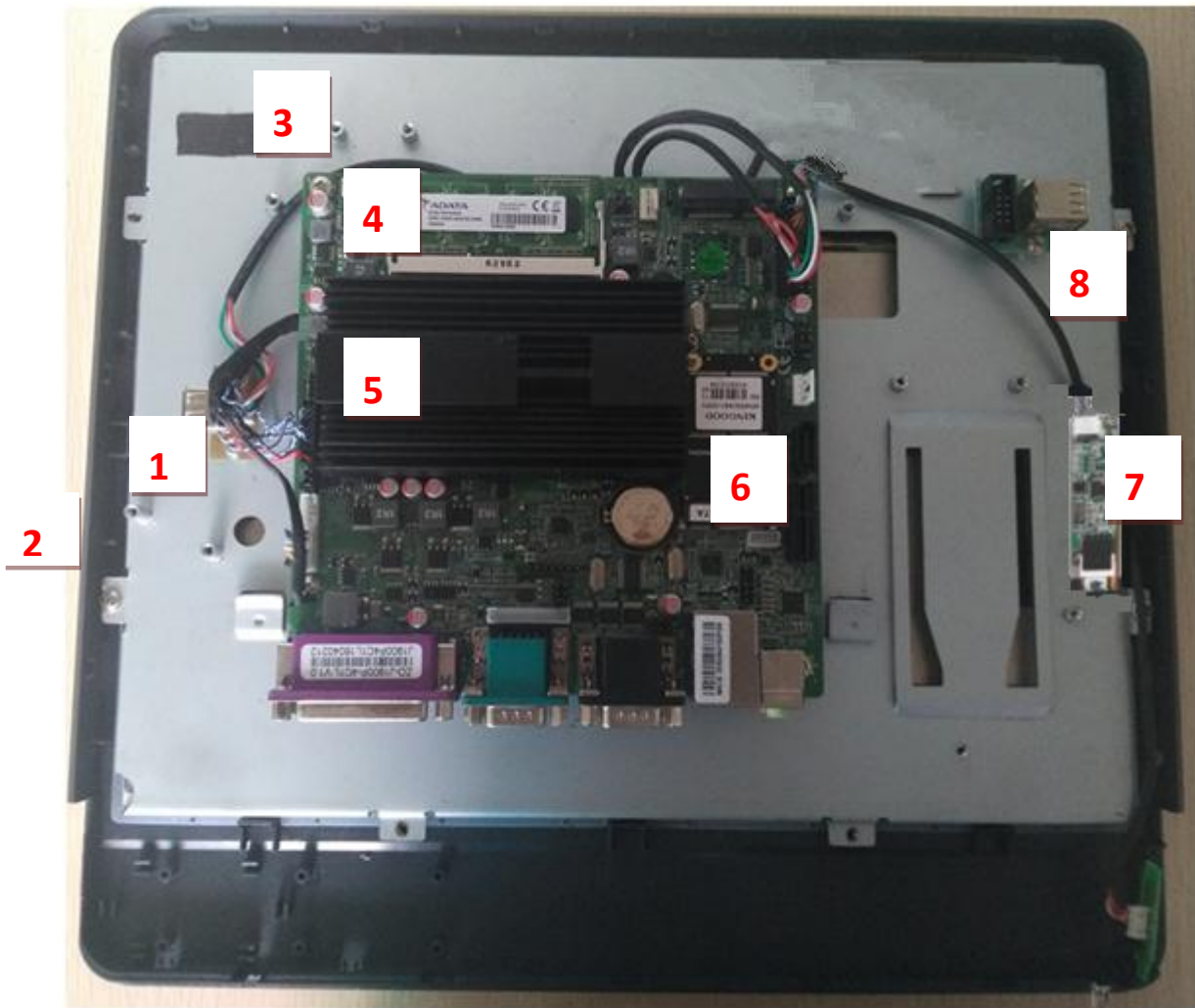


1. 15 inch high-definition main screens.
2. The host switch and lamp.
3. Basic machine
4. Custom display
5. Three orbital MSR.

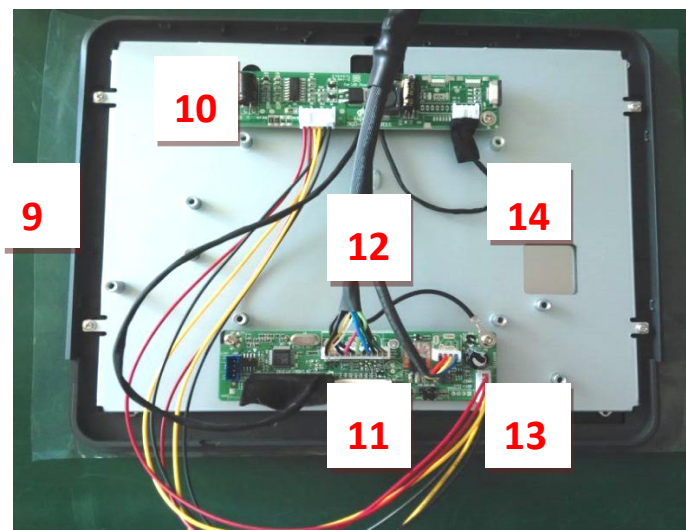
---

POS parts

Main Display



Custom Display



---

NO.	NAME	Quantity
1	USB interface	1
2	Top case	1
3	Speak	1
4	memory	1
5	Main board	1
6	Mini SATA SSD	1
7	Touch driver	1
8	USB	1
9	Top case for custom display	1
10	Backlight driver	1
11	Monitor driver	1
12	VGA cable	1
13	Backlight cable	1
14	LVDS cable	1

## Take Apart

### Before You Start

### Important Instructions

1. Read these instructions completely before you begin.
2. Follow all instructions.
3. Heed all warning.

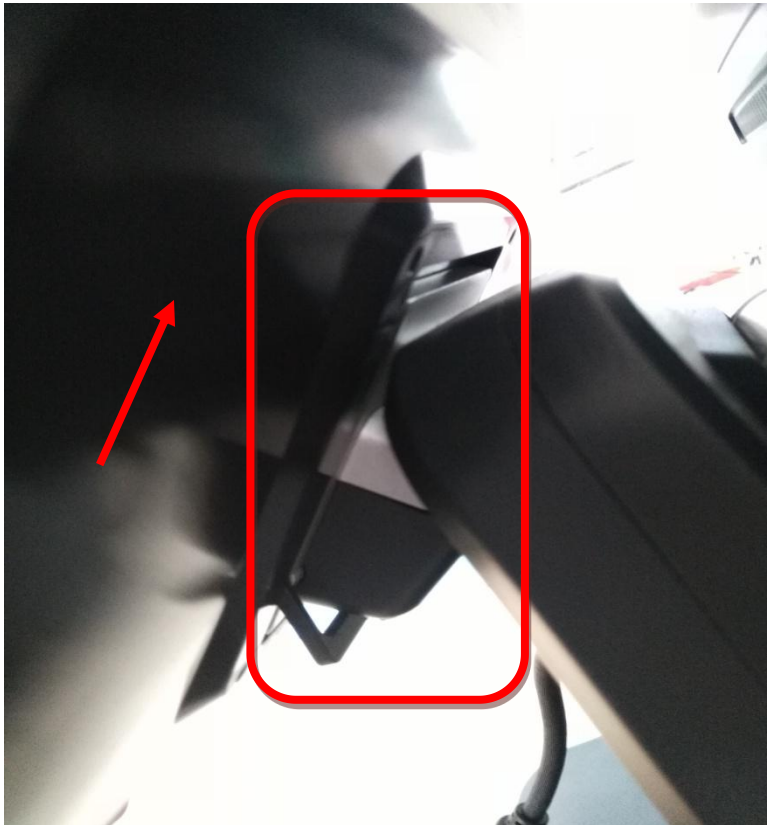
### Tools to prepare

Screwdriver

Please follow these steps to take apart E715.

### Host part

1. First of all, pull the plastic hook down, then take out the host.

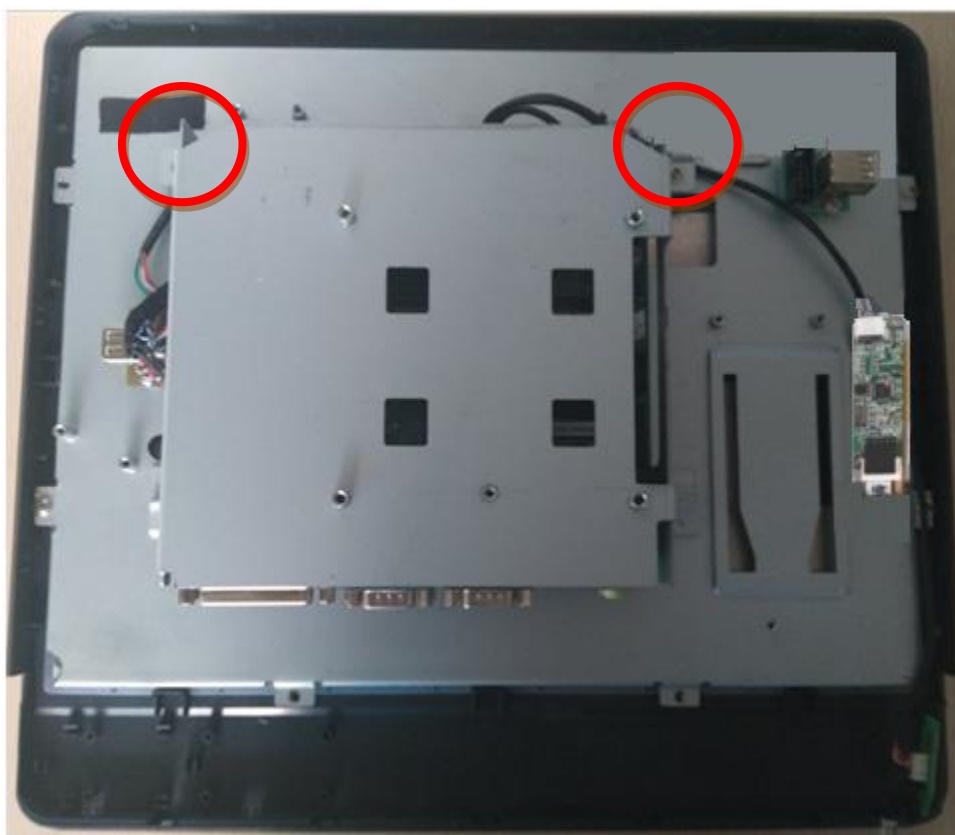


---

2. Next, disconnect the one screws, remove the rear shell.

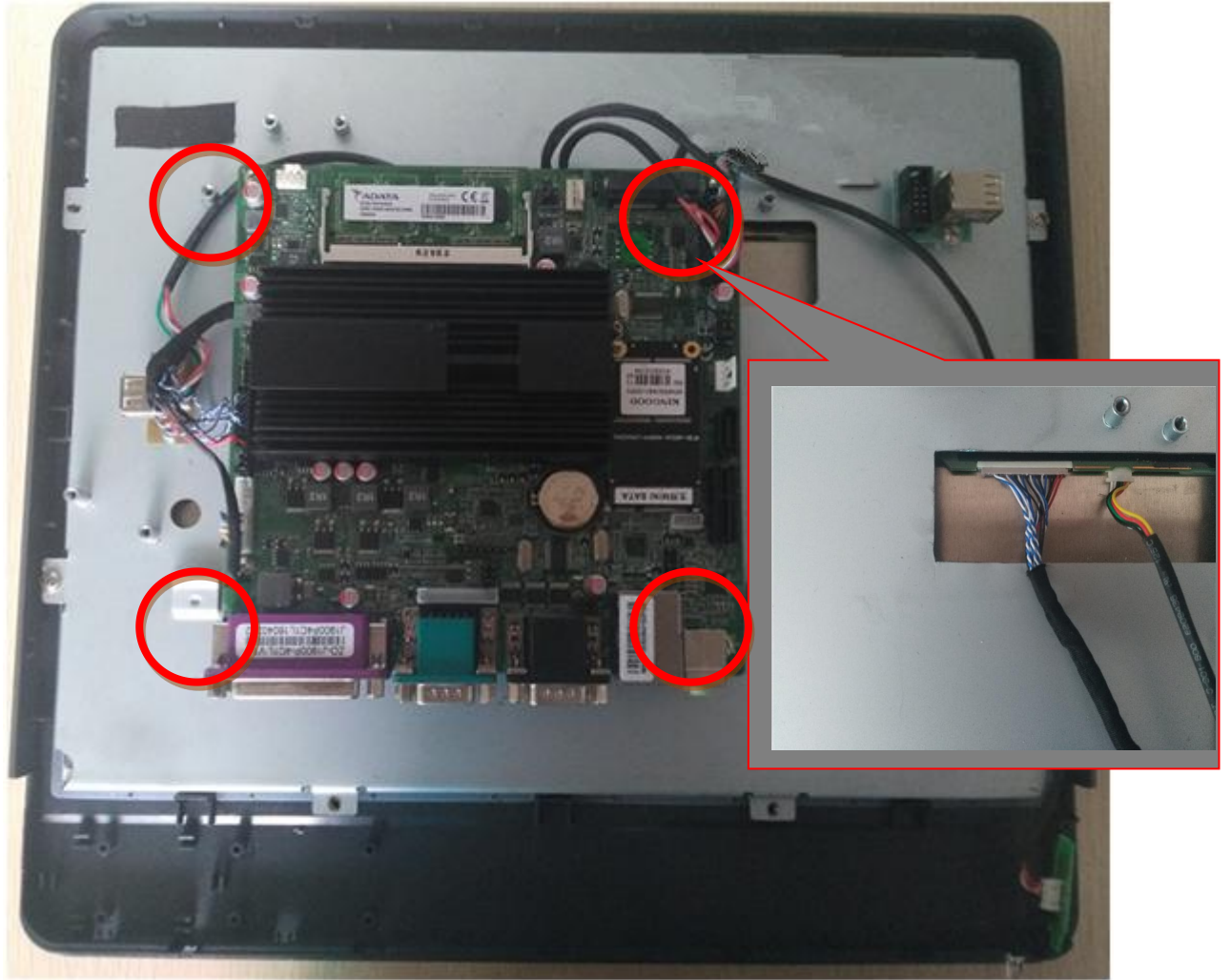


3. Remove the two screws, remove the metal back cover can see the main board.



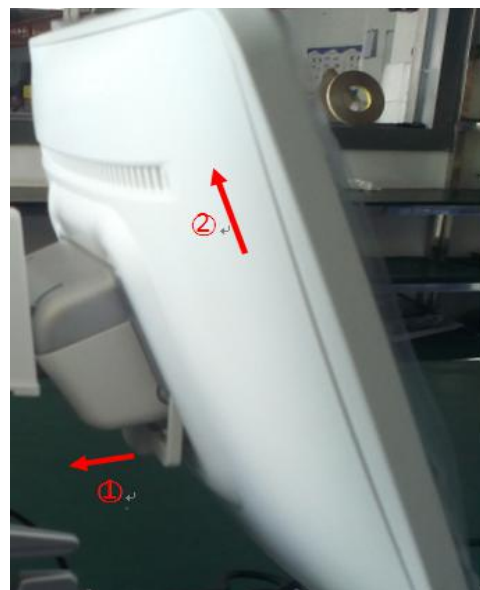
4. Will be fixed to the main board of the four screws removed, you can replace the main board.





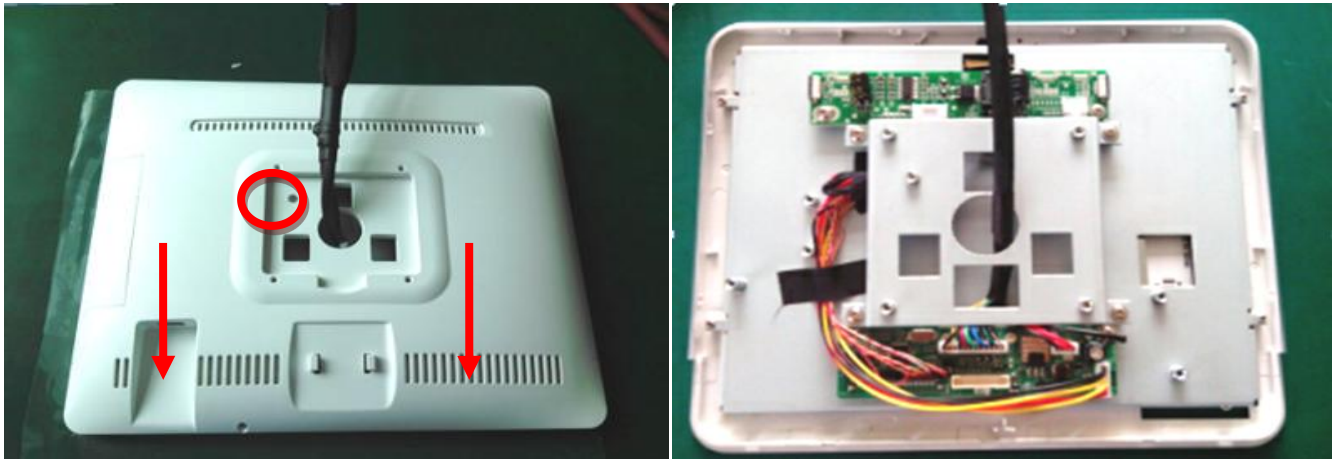
## Custom display

1. First, pull down the plastic hook, the final will screen out upwards.





2. After the tear down screws , on the smoked pull down after the plastic shell, open the shell.



3. Pull down the metal stent, then Pull the cable can in turn.

